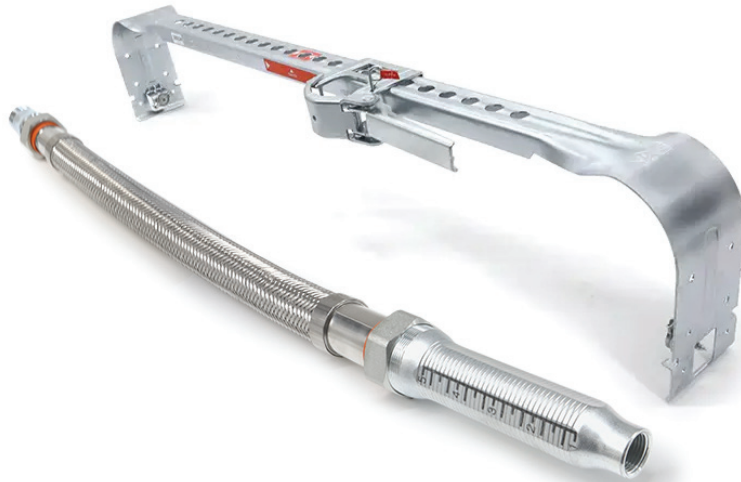


# INSTALLATION INSTRUCTIONS



## OGSB-02 BRACKET FOR SUSPENDED CEILINGS



### REQUIRED SYSTEM PARTS

- Flexible Hose
- OGSB One Piece Bracket

### REQUIRED TOOLS

- Pipe Wrench
- PTFE Tape

### ⚠ WARNING

- You must read and understand all instructions and warnings before attempting to install any Easyflex sprinkler drops system components.
- Failure to follow these instructions could cause improper operation resulting in serious injury or worse if person or property.
- We recommend wearing safety glasses, a hard hat, and foot protection during installation.

### INSTALLATION STEPS

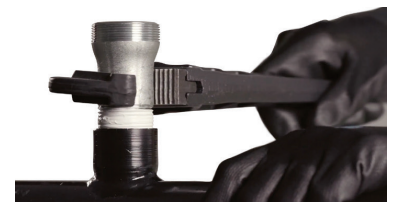
1. Inspect the Easyflex sprinkler drop system components for any sign of physical damage. Make sure all components are included and in the proper order.



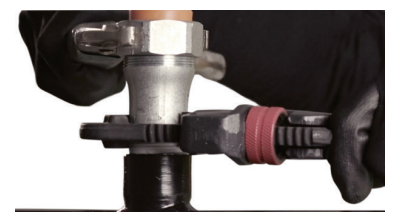
2. Disconnect the inlet nipple and outlet reducer from the flexible hose and check that a sealing gasket is in each place properly. Reconnect outlet reducer to the flexible hose.



3. Per the manufacturer's instructions, apply PTFE tape on the inlet nipple thread. Use a pipe wrench to connect inlet nipple to the branch line. Make sure both end threads are clean without any damage.



4. Use the pipe wrench to connect the flexible hose to the inlet nipple. Torque range should be a minimum of 50 to a maximum of 58 ft-lbs.



**DO NOT** use PTFE tape on the inlet nipple thread to connect to the flexible hose.

**INSTALLATION INSTRUCTIONS**



**OGSB-02 BRACKET FOR SUSPENDED CEILINGS**

**INSTALLATION STEPS**

5. Place the OGSB-02 at the desired position on the ceiling grid.



6. Once OGSB-02 is positioned, tighten the wing bolts to secure onto the grid.



7. When securely latched on, open the center bracket gate and load the hose.



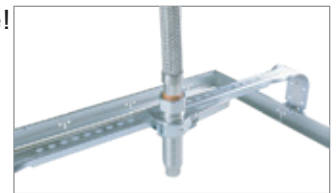
8. Close the gate of the center bracket from left to right.



9. Firmly push the lever toward the stock bar to secure the flexible drop.



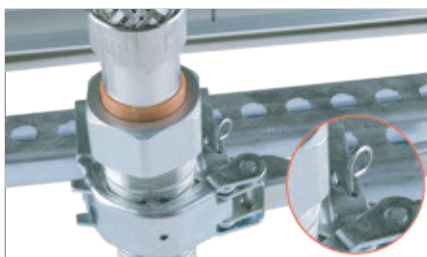
10. Installation is complete!



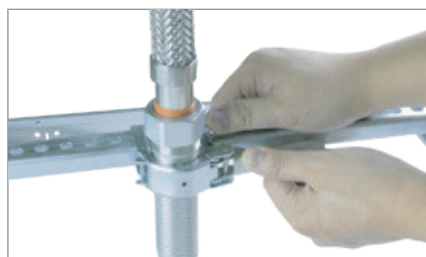
**Guidelines for ceiling tile installation after Easyflex flexible hose and OGSB02 have been installed**

- Height of the t-bar needs to be equal or greater than 1-3/8"
- Cut the largest recommended hole from the sprinkler manufacturer's installation instructions (a size that escutcheon will still cover)
- #1 square bits are recommended when maximizing the tightening of wingnuts towards the t-bar to create more room for tile installation
- Evaluate the installation with concealed sprinkler if ceiling tile thickness is greater than 3/4"

**When it is necessary to re-position the flexible drop, follow the below steps to release the center gate.**



Locate the ring-shaped release pin on the bracket.



Gently press the lever and push the release pin.



Pull the lever until the gate opens.